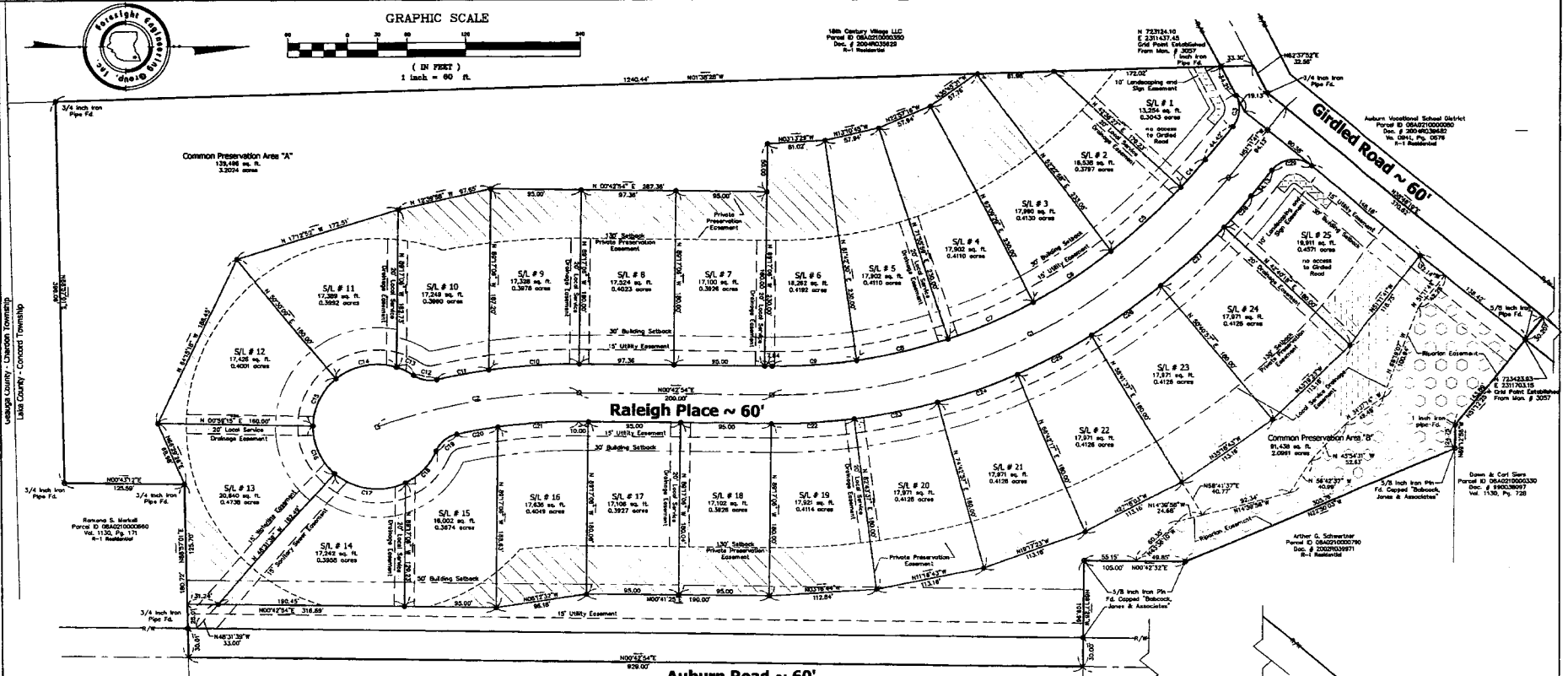


18th Century Village LLC
Parcel ID 08A0210000300
Doc. # 2004RC03823
R-1 Residential

Johnston Vocational School District
Parcel ID 08A0210000300
Doc. # 2004RC03823
R-1 Residential

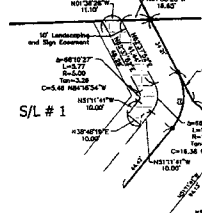


CURVE TABLE						
CURVE	Delta	Length	Radius	Chord	Chord Bearing	Chord Distance
C1	81.543°	543.40'	800.00'	282.08'	N89°14'37"	325.50'
C2	202.222°	214.51'	604.88'	107.41'	S89°26'14"	212.24'
C3	65.757°	31.81'	30.00'	19.42'	S86°15'45"	35.17'
C4	74.947°	27.83'	370.00'	18.92'	S84°57'27"	27.82'
C5	74.947°	27.21'	370.00'	18.74'	S84°57'27"	27.15'
C6	8.463°	87.25'	370.00'	48.74'	S24°43'47"	87.13'
C7	8.463°	87.25'	370.00'	48.74'	S24°43'47"	87.13'
C8	130.224°	86.89'	370.00'	54.86'	S80°37'17"	86.21'
C9	130.224°	85.30'	370.00'	52.77'	S80°37'17"	84.52'
C10	130.224°	84.88'	370.00'	52.45'	S80°37'17"	84.20'
C11	130.224°	84.91'	30.00'	13.22'	S80°37'17"	24.18'
C12	130.224°	84.91'	30.00'	13.22'	S80°37'17"	24.18'
C13	170.170°	19.31'	65.00'	8.72'	S26°08'36"	19.42'
C14	130.224°	64.77'	65.00'	26.26'	S80°37'17"	64.63'
C15	48.292°	64.77'	65.00'	26.26'	S80°37'17"	64.63'
C16	48.292°	64.77'	65.00'	26.26'	S80°37'17"	64.63'
C17	130.224°	78.15'	65.00'	44.13'	S80°37'17"	77.82'
C18	411.724°	46.77'	65.00'	24.45'	S84°56'07"	46.76'
C19	411.724°	28.81'	30.00'	15.87'	S84°56'07"	27.83'
C20	130.224°	43.44'	370.00'	21.78'	S80°37'17"	43.33'
C21	130.224°	66.11'	370.00'	33.65'	S80°37'17"	65.98'
C22	74.947°	87.83'	430.00'	43.89'	S80°37'17"	87.72'
C23	130.224°	86.89'	430.00'	44.14'	S80°37'17"	86.60'
C24	130.224°	86.89'	430.00'	44.14'	S80°37'17"	86.60'
C25	130.224°	86.89'	430.00'	44.14'	S80°37'17"	86.60'
C26	130.224°	86.89'	430.00'	44.14'	S80°37'17"	86.60'
C27	130.224°	86.89'	430.00'	44.14'	S80°37'17"	86.60'
C28	130.224°	86.89'	430.00'	44.14'	S80°37'17"	86.60'
C29	130.224°	86.89'	430.00'	44.14'	S80°37'17"	86.60'
C30	800.000°	421.12'	30.00'	30.00'	N00°11'11"	42.43'

FOP Association Ledger #25 ETAL
Parcel ID 08A0210000300
Vol. 50, Pg. 653
R-1 General Residential

LEGEND	
	Riparian Easement
	Local Service Drainage Easement
	10' Landscaping and Sign Easement
	Iron Pin Found
	Iron Pin Found in a Monument Box
	5' Offset Pin Set 30' Long and Copied "Through" Engineering
	Monument Box Set w/ 3/8" Iron Pin Inside, 30' Long and Copied "Through" Engineering

And does also grant to the Board of Lake County Commissioners, its agencies and agents (Garden Boxes) as shown herein "RIPARIAN EASEMENT" to permit repair and/or maintenance of riparian stream channels, instream vegetation, removal of debris and/or log jams in order to maintain riparian conditions and their stormwater management functions. This easement prohibits activities in the "RIPARIAN EASEMENT" that conflict with the maintenance of the Easement in its natural condition. No building, fence or structure shall be located within areas delineated on the "RIPARIAN EASEMENT" that will interfere with said access. Individual property owners over which said easements to be responsible for the daily maintenance of the easement, or use and regarding the use of riparian easement. The Grantor Board shall have the right, in their sole discretion, to remove fences, landscaping and lawn within the easement area as may be required to maintain said easement.



MARIE THOMAS O
Parcel ID 08A0210000300
Doc. # 2006C3220

5/8 inch Iron Pin
Set in Monument Box
N 72°56'52"E
D 237.0861178
Mon. # 2007 From Lake Co.
GIS Control Points File